

PRODUCT INFORMATION PACKET

Model No: 184TTDW16068

Catalog No: C124C

5 HP General Purpose Motor, 3 phase, 1800 RPM, 230/460 V, 184TC Frame, ODP
General Purpose Motors



Regal and Marathon are trademarks of Regal Rexnord Corporation or one of its affiliated companies.
©2021 Regal Rexnord Corporation, All Rights Reserved. MC017097E

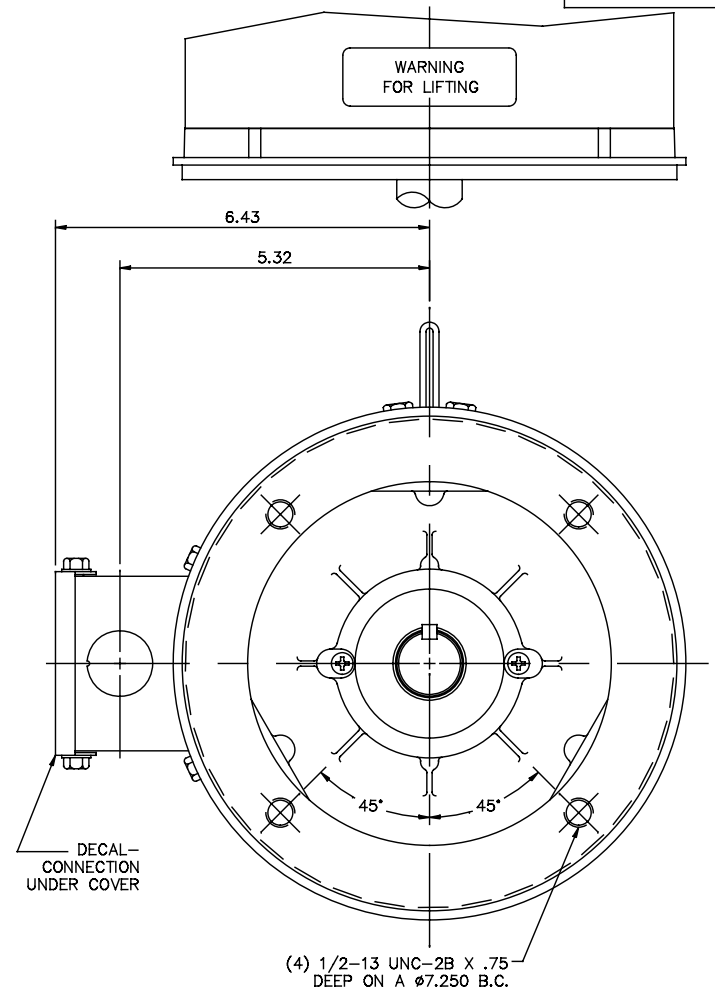
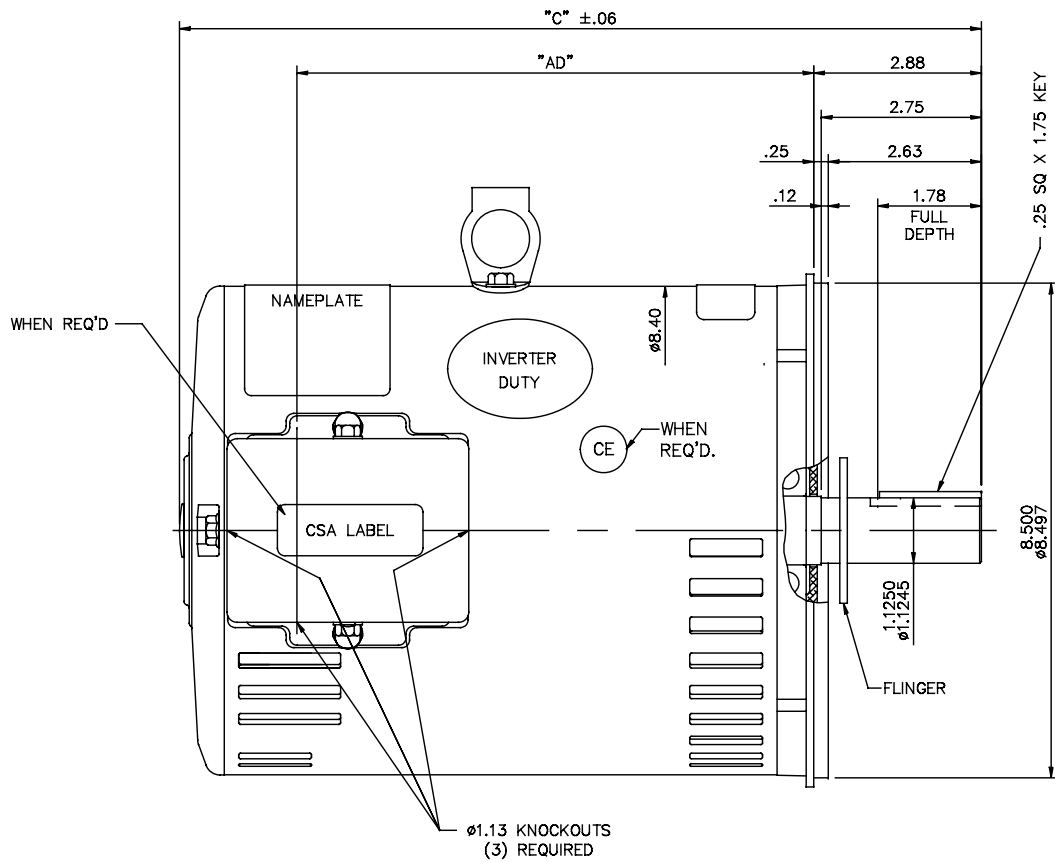
Nameplate Specifications

| | | | |
|------------------------|-------------------|----------------------------|-------------------|
| Output HP | 5 Hp | Output KW | 3.7 kW |
| Frequency | 60 Hz | Voltage | 230/460 V |
| Current | 12.6/6.3 A | Speed | 1755 rpm |
| Service Factor | 1.15 | Phase | 3 |
| Efficiency | 89.5 % | Power Factor | 83 |
| Duty | Continuous | Insulation Class | F |
| Design Code | B | KVA Code | J |
| Frame | 184TC | Enclosure | Drip Proof |
| Thermal Protection | No | Ambient Temperature | 40 °C |
| Drive End Bearing Size | 6206 | Opp Drive End Bearing Size | 6205 |
| UL | Recognized | CSA | Y |
| CE | Y | IP Code | 12 |
| Number of Speeds | 1 | | |

Technical Specifications

| | | | |
|-----------------------|------------------------------------|-----------------------|------------------------|
| Electrical Type | Squirrel Cage Induction Run | Starting Method | Across The Line |
| Poles | 4 | Rotation | Reversible |
| Resistance Main | 2.72 Ohms | Mounting | Round |
| Motor Orientation | Horizontal | Drive End Bearing | Ball |
| Opp Drive End Bearing | Ball | Frame Material | Rolled Steel |
| Shaft Type | T | Overall Length | 14.28 in |
| Frame Length | 10.00 in | Shaft Diameter | 1.125 in |
| Shaft Extension | 2.88 in | Assembly/Box Mounting | F1/F2 Capable |
| Outline Drawing | 035607-1000 | Connection Drawing | 005010.01ME |

035607



GASKETS THROUGHOUT

MAXIMUM FACE RUNOUT TO BE .004 T.I.R.
 MAXIMUM PILOT ECCENTRICITY TO BE .004 T.I.R.
 PERMISSIBLE SHAFT RUNOUT TO BE .002 T.I.R.

| DASH NO. | "C" | "AD" |
|----------|-------|-------|
| 800 | 12.28 | 7.38 |
| 850 | 12.78 | 7.88 |
| 900 | 13.28 | 8.38 |
| 950 | 13.78 | 8.88 |
| 1000 | 14.28 | 9.38 |
| 1050 | 14.78 | 9.88 |
| 1100 | 15.28 | 10.38 |
| 1150 | 15.78 | 10.88 |

| NO. | REVISION | BY & DATE | CHK | ANG | ±1/2" | TOLERANCES UNLESS SPECIFIED | |
|-----|------------------------------------|---------------|-----|-------|--------|-----------------------------|--------|
| | | | | | | DEC. | INCHES |
| 02 | CSA LABEL ADDED | PVR 06/24/15 | GR | .XXX | ±.005 | | |
| 01 | ADDED -800 LENGTH PER ISSAC09-3353 | SSK 8/17/2009 | | .XXXX | ±.0005 | | |
| | | | | | | | |
| | | | | | | | |
| | | | | | | | |
| | | | | | | | |
| | | | | | | | |
| | | | | | | | |
| | | | | | | | |

| | | |
|---|---------|----------------------|
| MARATHON ELECTRIC | | DRAWN KVN 01/02/2007 |
| TITLE OUTLINE - 180TC FRAME DRIP PROOF - "C" FACE | | CHK |
| MATERIAL MAT'L | | APPD |
| FINISH FINISH | | SCALE 1=2 |
| RFP | | REF 035593 |
| DIST NLV | | FMF 1821TDW8067 |
| CAD FILE 035607 | SIZE B | PREV |
| DRAWING NO. 035607 | REV. 02 | |

VIEW FROM OUTSIDE OF MOTOR AT SWITCH END.



| VOLTAGE | L1 | L2 | L3 | JOIN & INSULATE |
|---------|-------|-------|-------|-------------------------------|
| HIGH | T1 | T2 | T3 | (T4,T7) (T5,T8) (T6,T9) |
| LOW | T1,T7 | T2,T8 | T3,T9 | T4,T5,T6 |

| NO. | | REVISION | BY & DATE | CHK | ANG | ±1/2' | FINISH | DRAWN RDW 04/12/02 | |
|-----|--|----------|-----------|-----------------------------|----------|-------------------------|------------|--------------------|-------------|
| | | | | TOLERANCES UNLESS SPECIFIED | | | | CHK | |
| | | | | DEC. | INCHES | | | APPD | |
| | | | | .X | ±.1 | TITLE | | SCALE 1=1 | |
| | | | | .XX | ±.01 | EXTERNAL WIRING DIAGRAM | | REF FIG.2-51 | |
| | | | | .XXX | ±.005 | 3 PHASE W/O PROTECTOR | | FMF | |
| | | | | .XXXX | ±.0005 | MAT'L. DECAL - 004014 | | PREV | |
| | | | | RFP | 04/12/02 | CAD FILE | 00501001ME | SIZE | DRAWING NO. |
| | | | | DIST | | | | A | 005010-01ME |
| | | | | | | | | | REV. |

THIS DRAWING IN DESIGN AND DETAIL IS OUR PROPERTY AND MUST NOT BE USED EXCEPT IN CONNECTION WITH OUR WORK ALL RIGHTS OF DESIGN AND INVENTION ARE RESERVED THIS IS AN ELECTRONICALLY GENERATED DOCUMENT - DO NOT SCALE THIS PRINT

CERTIFICATION DATA SHEET

Model#: 184TTDW16068 AA
CONN. DIAGRAM: 005010.01ME
OUTLINE: 035607-1000

WINDING#: T84169 DR 3
ASSEMBLY: F1/F2 CAPABLE

TYPICAL MOTOR PERFORMANCE DATA

| HP | KW | SYNC. RPM | F.L. RPM | FRAME | ENCLOSURE | KVA CODE | DESIGN |
|-----|-----------|-----------|-----------|-------|-----------|----------|--------|
| 5&3 | 3.70&2.24 | 1800 | 1755&1470 | 184TC | DP | J | B |

| PH | Hz | VOLTS | FL AMPS | START TYPE | DUTY | INSL | S.F | AMB°C | ELEVATION |
|----|-------|---------------------|----------------------|--------------------|----------------|------|-----------|-------|-----------|
| 3 | 60/50 | 230/460#190/ 380 | 12.6/6.3&9.8/4 .9 | ACROSS THE LINE | CONTINUOU S | F4 | 1.15/1.15 | 40 | 3300 |

| FULL LOAD EFF: 89.5&89.5 | 3/4 LOAD EFF: 90.7 | 1/2 LOAD EFF: 90.3 | GTD. EFF | ELEC. TYPE | NO LOAD AMPS |
|-----------------------------|--------------------|--------------------|----------|-----------------|--------------|
| FULL LOAD PF: 83&78 | 3/4 LOAD PF: 78.4 | 1/2 LOAD PF: 68.6 | 87.5 | SQ CAGE IND RUN | 5 / 2.5 |

| F.L. TORQUE | LOCKED ROTOR AMPS | L.R. TORQUE | B.D. TORQUE | F.L. RISE°C |
|-------------|-------------------|--------------|----------------|-------------|
| 14.95 LB-FT | 95 / 47.5 | 30 LB-FT 200 | 49.3 LB-FT 329 | 50 |

| SOUND PRESSURE @ 3 FT. | SOUND POWER | ROTOR WK^2 | MAX. WK^2 | SAFE STALL TIME | STARTS /HOUR | APPROX. MOTOR WGT |
|---------------------------|-------------|---------------|-----------|-----------------|-----------------|----------------------|
| 0 dBA | 10 dBA | 0.434 LB-FT^2 | 0 LB-FT^2 | 15 SEC. | 2 | 0 LBS. |

***** SUPPLEMENTAL INFORMATION *****

| DE BRACKET TYPE | ODE BRACKET TYPE | MOUNT TYPE | ORIENTATION | SEVERE DUTY | HAZARDOUS LOCATION | DRIP COVER | SCREENS | PAINT |
|--------------------|---------------------|---------------|-------------|----------------|-----------------------|--------------------|---------|------------------|
| C-FACE | STANDARD | ROUND | HORIZONTAL | FALSE | NONE | PROVISIONS ONLY | NONE | BLUE (ENAMEL) |

| BEARINGS | | GREASE | SHAFT TYPE | SPECIAL DE | SPECIAL ODE | SHAFT MATERIAL | FRAME MATERIAL |
|----------|------|------------|------------|------------|-------------|-------------------|-------------------|
| DE | OPE | | | | | | |
| BALL | BALL | POLYREX EM | T | NONE | NONE | AISI 1045 (C-240) | ROLLED STEEL |
| 6206 | 6205 | | | | | | |

| THERMO-PROTECTORS | | | | THERMISTORS | CONTROL | SPACE /n HEATERS |
|-------------------|------------|----------|----------|-------------|---------|------------------|
| THERMOSTATS | PROTECTORS | WDG RTDs | BRG RTDs | | | |
| NONE | NOT | NONE | NONE | NONE | FALSE | NONE VOLTS |

If Inverter equals NONE, contact factory for further information

*
N
O
T
E
S
*

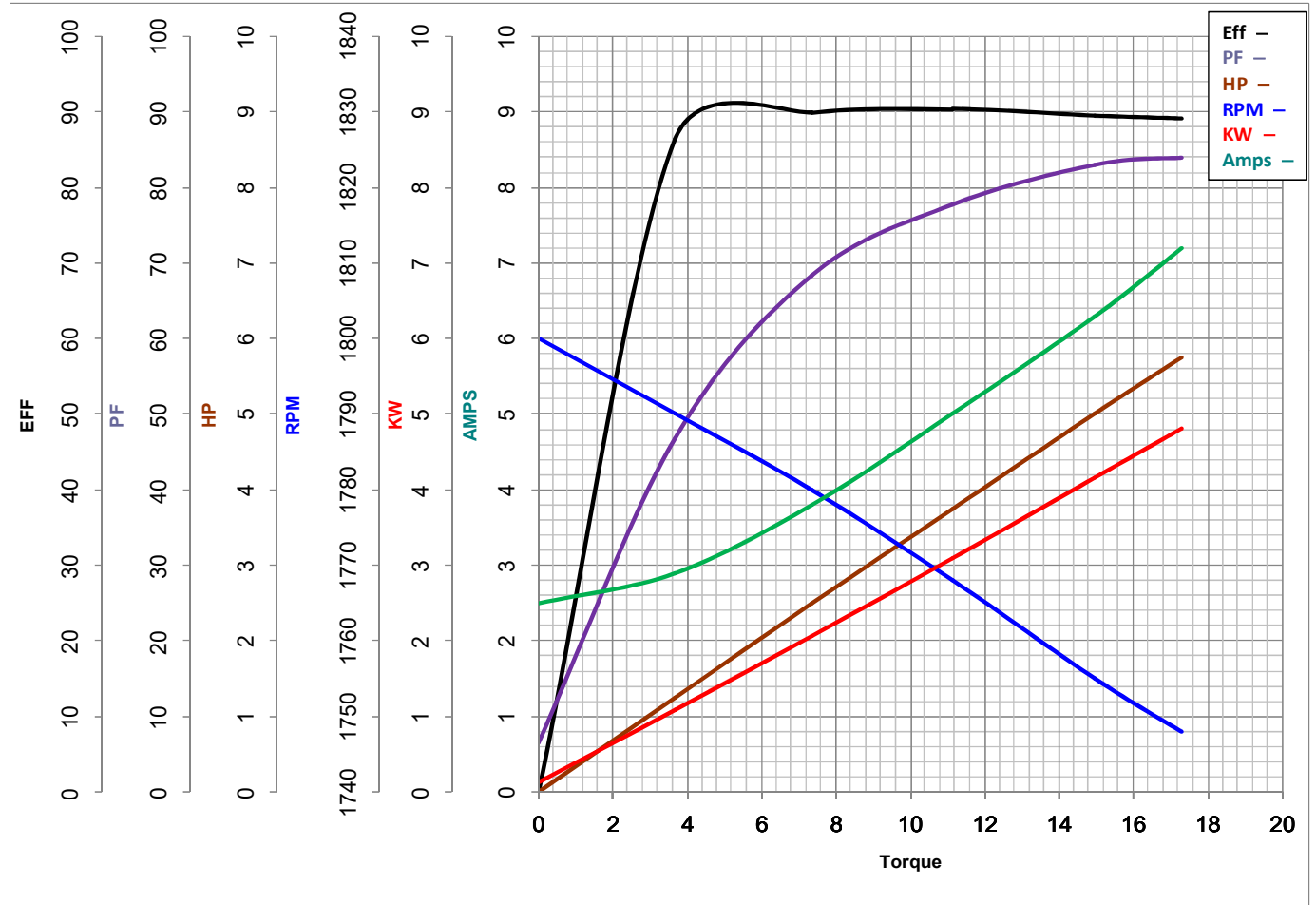
| |
|---------------------------|
| INVERTER TORQUE: NONE |
| INV. HP SPEED RANGE: NONE |
| ENCODER: NONE |
| NONE NONE |
| NONE NONE PPR |
| BRAKE: NONE NONE |
| NONE P/N NONE |
| NONE NONE |
| NONE FT-LB NONE V NONE Hz |

DATE: 06/28/2017 06:39:31 AM
 FORM 3531 REV.3 02/07/99
 ** Subject to change without notice.



MARATHON ELECTRIC CORPORATION
TYPICAL PERFORMANCE CURVE for AC MOTOR

Customer _____ Curve at 460 Volts HP 5&3 PHASE 3
 Model No 184TTDW16068 60 HZ 5 HP VOLTS 230/460&190/380
 Catalog No C124C HZ 60&50 RPM 1755&1470



| | | | | | |
|-----------|--------------|-------|-----------|-----------------|-------|
| FL TORQUE | <u>14.95</u> | Lb.Ft | FL AMPS | <u>12.6/6.3</u> | |
| BD TORQUE | <u>47.7</u> | Lb.Ft | PU TORQUE | <u>29.0</u> | Lb.Ft |
| LR TORQUE | <u>30</u> | Lb.Ft | LR AMPS | <u>46.3</u> | |
| WINDING | T84169-3 | | Date | 1/10/2019 | |