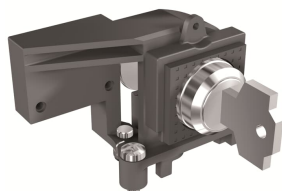


PRODUCT-DETAILS

KLC-S Key lock open N.20005 E2.2..E6.2

KLC-S Key lock open N.20005 E2.2..E6.2



General Information

Extended Product Type	KLC-S Key lock open N.20005 E2.2..E6.2
Product ID	1SDA073792R1
EAN	801564477258
Catalog Description	KLC-S Key lock open N.20005 E2.2..E6.2
Long Description	KEY LOCK EQUAL N.20005 IN OPEN BETWEEN MORE C.BREAKERS E2.2...E6.2

Ordering

Order Code US and Canada	ZEBKLC55
EAN	801564477258
Minimum Order Quantity	1 piece
Customs Tariff Number	85389099

Dimensions

Product Net Weight	0,2 kg
--------------------	--------

Container Information

Package Level 1 Units	box 1 piece
Package Level 1 Width	145 mm
Package Level 1 Height	30 mm

Package Level 1 Depth / Length	200 mm
Package Level 1 Gross Weight	0.3 kg
Package Level 1 EAN	801564477258

Environmental

RoHS Status	Following EU Directive 2011/65/EU and Amendment 2015/863 July 22, 2019
Conflict Minerals Reporting Template (CMRT)	9AKK108467A5658
Environmental Information	9AKK108467A6707
REACH Declaration	9AKK108466A1425
RoHS Information	9AKK108466A1424
Toxic Substances Control Act - TSCA	9AKK108467A8326

Additional Information

Configuration Type	Loose or configurable
Product Main Type	Accessories for Emax 2
Product Name	Accessory
Product Type	Accessory
Standards	IEC
Suitable For	E2.2, E4.2, E6.2
Suitable for Product Class	SACE Emax 2

Certificates and Declarations (Document Number)

Data Sheet, Technical Information	1SDC200023D0204
Declaration of Conformity - CE	Refer to the EU Declaration of the relative Circuit Breaker
Environmental Information	9AKK108467A6707
Instructions and Manuals	1SDH001000R0702
REACH Declaration	9AKK108466A1425
RoHS Information	9AKK108466A1424

Classifications

ETIM 6	EC002498 - Accessories for low-voltage switch technology
ETIM 7	EC002498 - Accessories for low-voltage switch technology
ETIM 8	EC002498 - Accessories/spare parts for low-voltage switch technology
Object Classification Code	Q
UNSPSC	39122221
WEEE Category	5. Small Equipment (No External Dimension More Than 50 cm)
eClass	V11.1 : 27371392
IDEA Granular Category Code (IGCC)	5219 >> Switch part or accessory

Categories

Low Voltage Products and Systems → Circuit Breakers → Air Circuit Breakers → Accessories for Emax 2

