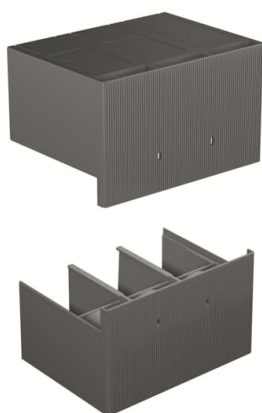


PRODUCT-DETAILS

TERMINAL COVERS HIGH 3P S6-T6

TERMINAL COVERS HIGH 3P S6-T6



General Information

Extended Product Type	TERMINAL COVERS HIGH 3P S6-T6
Product ID	1SDA014040R1
EAN	8015644140403
Catalog Description	TERMINAL COVERS HIGH 3P S6-T6
Long Description	HIGH TERMINAL-COVERS THREE-POLE S6-T6

Ordering

Order Code US and Canada	KT6HTC-3
E-Number (Finland)	3655711
EAN	8015644140403
Minimum Order Quantity	1 piece
Customs Tariff Number	85389099

Dimensions

Product Net Weight	0.515 kg
--------------------	----------

Container Information

Package Level 1 Units	1 piece
Package Level 1 Width	122 mm
Package Level 1 Height	86 mm

Package Level 1 Depth / Length	224 mm
Package Level 1 Gross Weight	0.515 kg
Package Level 1 EAN	8015644140403

Environmental

RoHS Status	Following EU Directive 2011/65/EU and Amendment 2015/863 July 22, 2019
Conflict Minerals Reporting Template (CMRT)	9AKK108467A5658
Environmental Information	9AKK108467A6707
REACH Declaration	9AKK108466A1425
RoHS Information	9AKK108466A1424
Toxic Substances Control Act - TSCA	9AKK108467A8326

Additional Information

Configuration Type	Loose or configurable
Device	S6 - 3 pole
Number of Poles	3
Product Main Type	Accessories for Tmax T
Product Name	Accessory
Product Type	ACC
Standards	IEC
Suitable For	S6, T6
Suitable for Product Class	SACE Tmax T SACE Isomax

Certificates and Declarations (Document Number)

Data Sheet, Technical Information	1SDC210015D0208 1SDC210300D0201
Declaration of Conformity - CE	Refer to the EU Declaration of the relative Circuit Breaker
Environmental Information	9AKK108467A6707
Instructions and Manuals	1SDH000479R0643
REACH Declaration	9AKK108466A1425
RoHS Information	9AKK108466A1424

Classifications

ETIM 6	EC002268 - Cover cap for rail terminal bar
ETIM 7	EC002268 - Cover cap for rail terminal bar
ETIM 8	EC002268 - Cover cap for rail terminal bar
Object Classification Code	Q
UNSPSC	39122221
WEEE Category	5. Small Equipment (No External Dimension More Than 50 cm)
eClass	V11.1 : 27400635
IDEA Granular Category Code (IGCC)	5228 >> Accessories for low-voltage switch technology

Categories

Low Voltage Products and Systems → Circuit Breakers → Moulded Case Circuit Breakers → Accessories for Isomax
Low Voltage Products and Systems → Circuit Breakers → Moulded Case Circuit Breakers → Accessories for Tmax T

