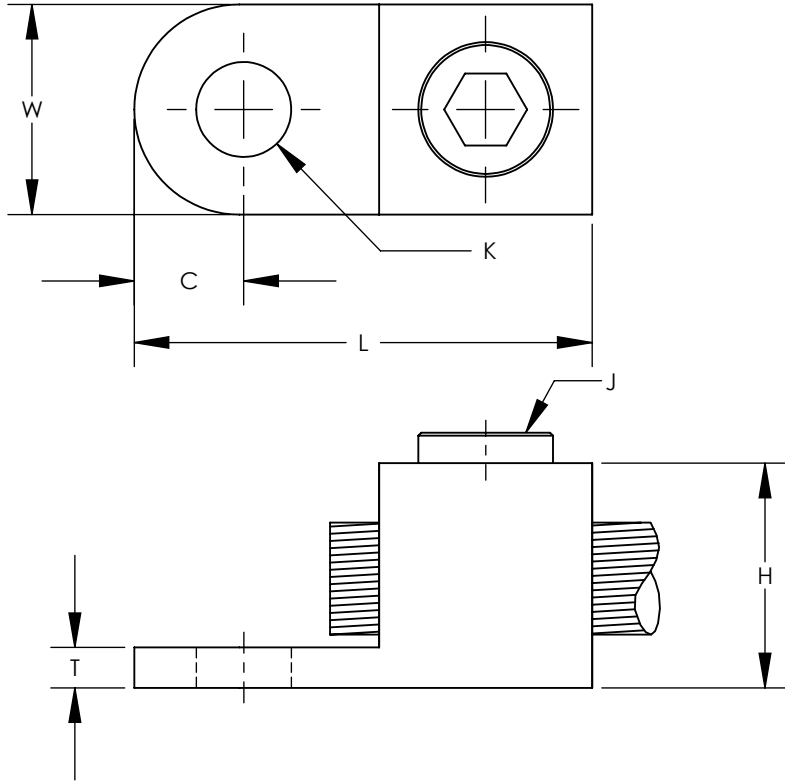


THIS COPY IS PROVIDED ON A RESTRICTED BASIS AND IS NOT TO BE USED IN ANY WAY DETRIMENTAL TO THE INTERESTS OF PANDUIT CORP.



NOTES:

1. UL LISTED AND CSA CERTIFIED
2. FOR COPPER WIRE ONLY.
3. DIMENSIONS ARE INCHES. DIMENSIONS IN PARENTHESIS ARE MILLIMETERS.
4. IF HEX KEY IS NOT GIVEN, FLAT HEAD SCREW IS USED.



| PANDUIT PART NUMBER | CONDUCTOR RANGE | WIRE DIAMETER RANGE - IN | APPROXIMATE DIMENSIONS - IN [mm] | | | | | | | WRENCH SIZE | TORQUE VALUE |
|---------------------|------------------------|--------------------------|----------------------------------|----------|-----------|-----------|------------|-----------|----------|---------------------|--------------|
| | | | C | K | H | L | T | W | J | | |
| PNL-4-C | 14 SOL - 4 STR | .064-.232 | .27 [7] | .27 [7] | .56 [14] | 1.25 [32] | .14 [3.57] | .53 [13] | 5/16-24 | SLOTTED SCREWDRIVER | 45 |
| PNL1/0-L | 8 SOL - 1/0 STR | .128-.375 | .38 [10] | .33 [8] | .78 [20] | 1.59 [40] | .14 [3.57] | .73 [16] | 1/2-20 | 1/4" | 200 |
| PNL-250-Q | 6 SOL - 250 kcmil | .162-.575 | .44 [11] | .39 [10] | 1.05 [27] | 1.97 [50] | .13 [3.17] | .94 [24] | 5/8-18 | 5/16" | 275 |
| PNL-500-3 | 4 SOL - 500 kcmil | .204-.815 | .75 [19] | .53 [13] | 1.47 [43] | 3.00 [76] | .25 [6.35] | 1.38 [35] | 15/16-16 | 3/8" | 375 |
| PNL-1000-3 | 500 kcmil - 1000 kcmil | .815-1.153 | .69 [17] | .56 [14] | 2.00 [51] | 3.88 [99] | .38 [9.52] | 1.75 [44] | 1-3/8-14 | 1/2" | 500 |

| REV | DATE | BY | CHK | APR | DESCRIPTION | ECN |
|-----|------|------|------|-----|---------------------|-----------------|
| 04 | 3/13 | JHNU | JHNU | RGB | REVISED TITLE BLOCK | N41174BB-C41174 |

| | |
|---|--------------------|
| TITLE CONE SCREW LUG CONNECTOR CUSTOMER DRAWING | |
| ITEM REVISION NAME | N41174BB-C41174/04 |
| DATASET FILE NAME | C41174/04.SLDDRW |
| UNLESS OTHERWISE SPECIFIED, DIMENSIONAL TOLERANCES ARE: IN [mm] .X ± .XXX ± .XX ± ANGLES ± | |
| THIRD ANGLE PROJECTION | |
| DRAWING NUMBER C41174_04 | |
| DRAWN BY TM | DATE 10/96 |
| CHK XXXX | SCALE NONE |
| SHEET 1 OF 1 | |
| SIZE A | |



MATERIAL
SEE NOTES

