

NetKey® Category 6 Punchdown Patch Panels

PANDUIT®

DATA SHEET

specifications

Category 6/Class E punchdown patch panels shall terminate unshielded twisted 4-pair, 22 – 26 AWG, 100 ohm cable and mount to standard EIA 19" or 23" racks. Punchdown tool shall properly terminate each conductor for optimum performance. Universal T568A and T568B color-coded wiring schemes included.



technical information

Category 6/Class D channel performance:	Meets all TIA/EIA-568-C.2 Category 6 and ISO 11801 2nd Edition Class E channel requirements at swept frequencies up to 250 MHz
FCC compliance:	Meets ANSI/TIA-968-A; contacts plated with 50 microinches of gold
IEC compliance:	Meets IEC 60603-7
PoE compliance:	Meets requirements of IEEE 802.3af and IEEE 802.3at for PoE applications
UL rated:	UL 1863 approved
RoHS compliance:	Compliant
Mounting options:	Mounts to standard EIA 19" or 23" racks (23" requires use of extender brackets); 12-port suitable for wall mount with 89D bracket

key features and benefits

100% performance tested	Confidence that each port delivers specified performance
110 style punchdown termination	Utilizes industry standard termination style and includes retention cap
Identification	Write-on areas allow for port and panel identification
Industry standard RJ45 interface	Familiar to end-users; backwards compatible
Angled design (optional)	Facilitates proper bend radius control and minimizes the need for horizontal cable managers

applications

Applications include:

- Ethernet 10BASE-T, 100BASE-T (Fast Ethernet), and 1000BASE-T (Gigabit Ethernet)
- 155 Mb/s ATM, 622 Mb/s ATM, 1.2 Gb/s ATM
- Token Ring 4/16
- Voice over Internet Protocol (VoIP)

NetKey® Network Components

NetKey® Category 6 Angled Punchdown Patch Panels

24-port, 1 RU:	NKA6PPG24Y
48-port, 2 RU:	NKA6PPG48Y

NetKey® Category 6 Flat Punchdown Patch Panels

12-port:	NK6PPG12WY
24-port, 1 RU:	NK6PPG24Y
48-port, 2 RU:	NK6PPG48Y

NetKey® Category 6 Patch Cords

Foot lengths:	NK6PC3**Y
Meter lengths:	NK6PC1M^Y

Termination Tools

Punchdown tool:	PDT110‡
Snipping tool:	CWST
Stripping tool:	CJAST

*To designate a color, add suffix IW (Off White), EI (Electric Ivory), IG (Int'l Gray), WH (White), BL (Black), OR (Orange), RD (Red), BU (Blue), GR (Green) or YL (Yellow).

**For standard lengths other than 3 feet (5, 7, 10, 14 or 20) change the length designation in part number to the desired length. For standard cable colors other than Off White, add suffix BU (Blue), GR (Green), RD (Red) or YL (Yellow) before the Y at the end of the part number. For example, the part number for a blue 5 foot patch cord is NK6PC5BUY.

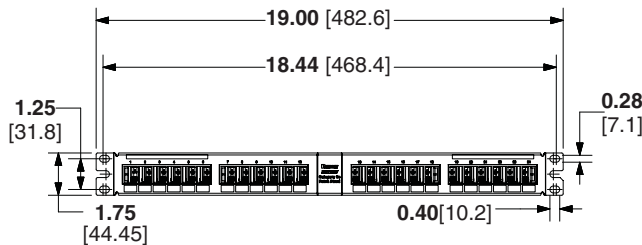
^For standard lengths other than 1 meter (2, 3, 4 or 5) change the length designation in part number to the desired length. For standard cable colors other than Off White, add suffix BU (Blue), GR (Green), RD (Red) or YL (Yellow) before the Y at the end of the part number. For example, the part number for a blue 5 meter patch cord is NK6PC5MBUY.

‡Terminates the NetKey® Keystone Punchdown Jack Module and NetKey® Punchdown Patch Panels.

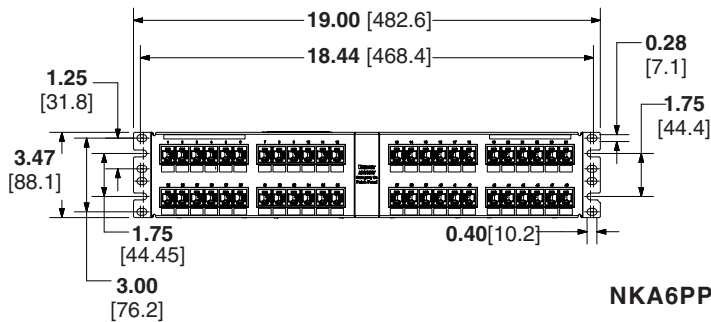
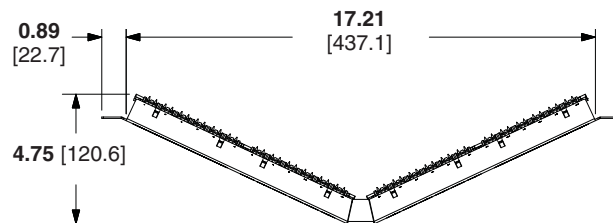
NetKey® Category 6 Punchdown Patch Panels

NetKey® Category 6 Electrical Performance

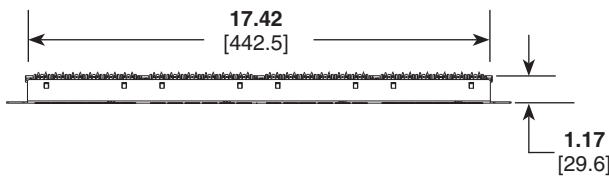
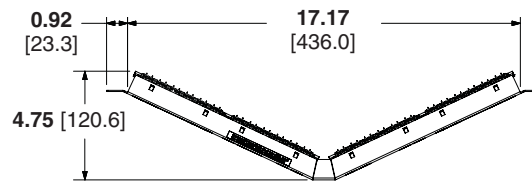
Parameters	dB @ 250 MHz
NEXT	> 46.0
FEXT	> 35.1
Attenuation	> 0.32
Return Loss	> 16.0
LCL	> 20.0



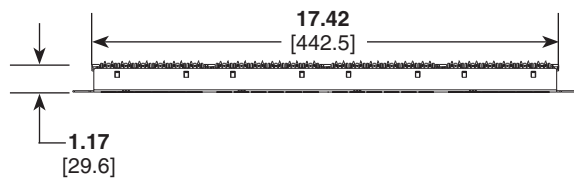
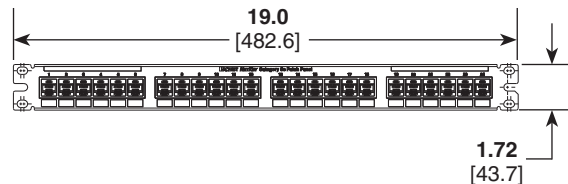
NKA6PPG24Y



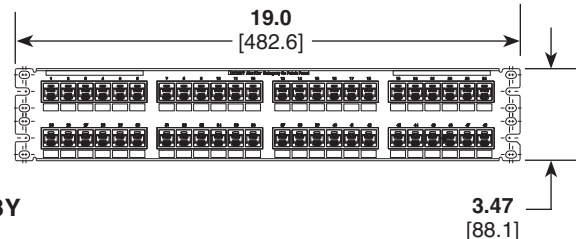
NKA6PPG48Y



NK6PPG24Y



NK6PPG48Y



Dimensions are in inches [Dimensions in brackets are metric]

WORLDWIDE SUBSIDIARIES AND SALES OFFICES

PANDUIT CANADA
Markham, Ontario
cs-cdn@panduit.com
Phone: 800.777.3300

PANDUIT EUROPE LTD.
London, UK
cs-emea@panduit.com
Phone: 44.20.8601.7200

PANDUIT SINGAPORE PTE. LTD.
Republic of Singapore
cs-ap@panduit.com
Phone: 65.6305.7575

PANDUIT JAPAN
Tokyo, Japan
cs-japan@panduit.com
Phone: 81.3.6863.6000

PANDUIT LATIN AMERICA
Guadalajara, Mexico
cs-la@panduit.com
Phone: 52.33.3777.6000

PANDUIT AUSTRALIA PTY. LTD.
Victoria, Australia
cs-aus@panduit.com
Phone: 61.3.9794.9020

For a copy of Panduit product warranties, log on to www.panduit.com/warranty

For more information

Visit us at www.panduit.com

Contact Customer Service by email: cs@panduit.com
or by phone: 800.777.3300

PANDUIT®

©2013 Panduit Corp.
ALL RIGHTS RESERVED.
NKDS43--WW-ENG
9/2013